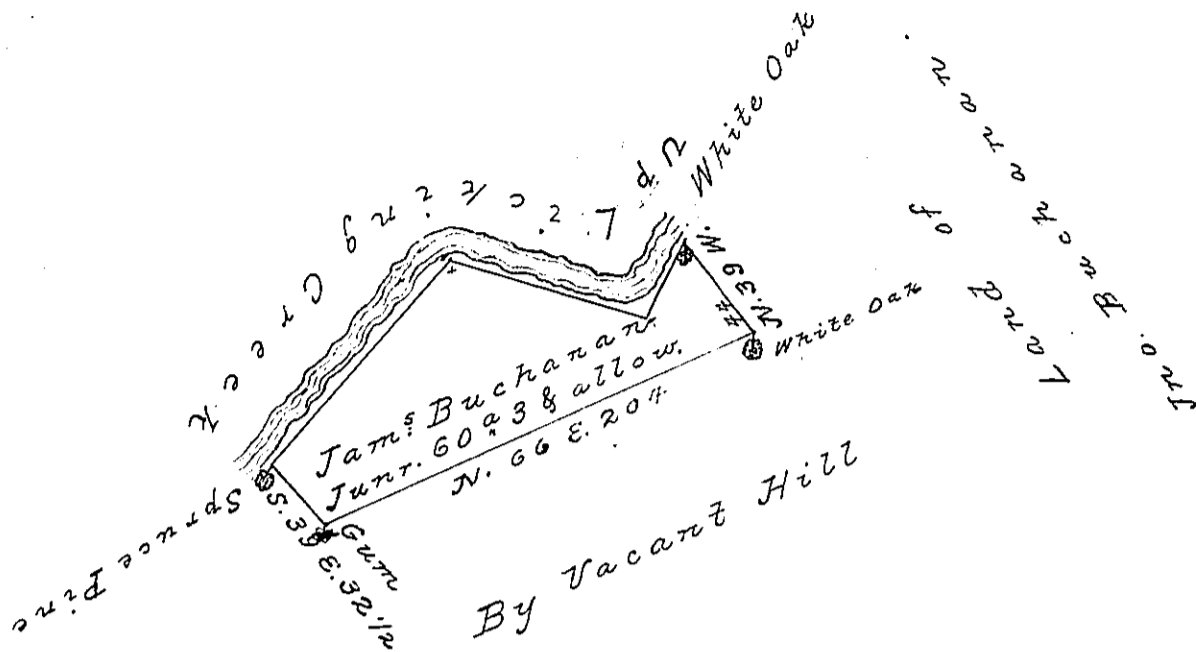


Courses & distances  
up the Creek

S. 29 W. 32

N. 76 W. 89

S. 42 W. 115



The Draught of a Tract of Land called, \_\_\_\_\_  
 situate on Licking Creek, in Tuscarora Valley, for-  
 merly Cumberland, now in Mifflin County, contain-  
 ing sixty acres and sixty perches with allowance pro-  
 portion'd. to Six p Cent. for Roads, Survey'd. the 27<sup>th</sup>  
 day of April. A. Dom. 1767 In pursuance of an Order  
 of Survey to James Buchanan Junr. dated at Philada  
 the 14<sup>th</sup> of Jan'y. 1767 no. 2392. and copyed from the  
 Old Field Works the 12<sup>th</sup> of May a Dom. 1796-

To Daniel Brodhead Esq. }  
 S. G. of Pennsylvania } Wm Maclay

IN TESTIMONY that the above is a copy of the original remaining on file in the  
 Department of Internal Affairs of Pennsylvania, made con-  
 formably to an Act of Assembly approved the 16th day of  
 February, 1833. I have hereunto set my Hand and caused  
 the Seal of said Department to be affixed at Harrisburg, this

First day of September 1896.

James Watta  
 Secretary of Internal Affairs.